



HELLENIC AGRICULTURAL ORGANIZATION - DEMETER

DIRECTORATE GENERAL OF AGRICULTURAL RESEARCH



INSTITUTE OF PLANT BREEDING AND GENETIC RESOURCES
DEPARTMENT OF AROMATIC AND MEDICINAL PLANTS
P.O. Box 60458, GR-57001, THERMI, THESSALONIKI, GREECE
TEL.: +30 2310 471 110, ext. 0 202
FAX: +30 2310 473 024
Email: chatzopoulou@ipgrb.gr
aromparc.ethiaqe@gmail.com

Thessaloniki, 14 July 2020
Prot.no: 2084

To AETHERIAL OILS - "Single Member
Private Company"
Karathanasi & Vlahakou
GR-56224
EVOSMOS, THESSALONIKI
GREECE

Certificate of Analysis

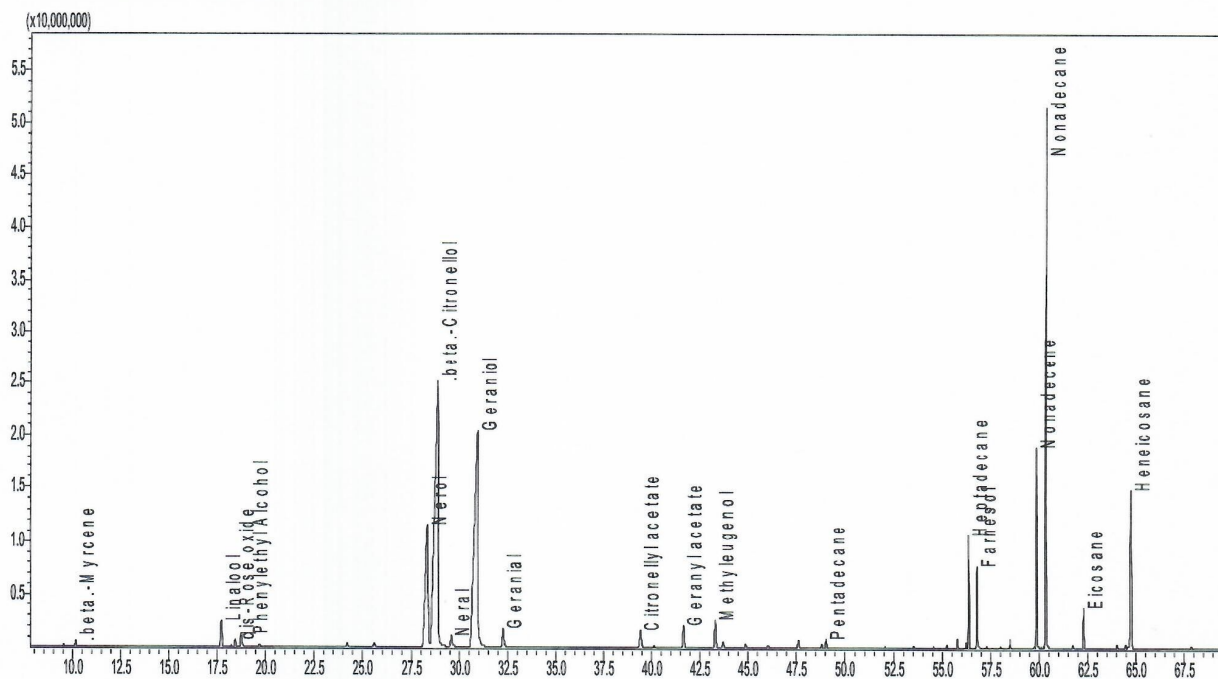
Sample number	:	1
Sample type	:	ROSE ESSENTIAL OIL
Batch number	:	0035
Customer name	:	AETHERIAL OILS
Region	:	EVOSMOS, THESSALONIKI, GREECE



Analysis conditions:

GC/MS : Gas Chromatograph 17A Ver. 3 / Mass Spectrometer Shimadzu QP-5050A / GC/MSSolution Ver1.21 software / column: DB-5 30m x 0,25mm x 0,25µm Carrier gas : He
Temperature program: 55–110°C (1,5°C/min), 110–150°C (3°C/min), 150–220°C (8°C/min) and 220°C for 10 min

Chromatographic profile (GC/MS)





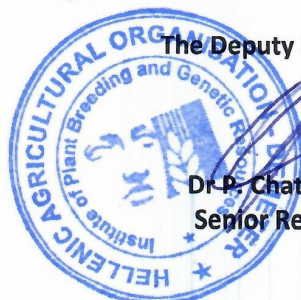

Thessaloniki, 14 July 2020

Prot.no: 2084

Sample number	:	1
Sample type	:	ROSE ESSENTIAL OIL
Sample code	:	0035
Customer name	:	AETHERIAL OILS
Region	:	EVOSMOS, THESSALONIKI, GREECE

ESSENTIAL OIL ANALYSIS			
COMPOUND	% YIELD	COMPOUND	% YIELD
α -Pinene	0,25	beta-Elemene	0,06
β -Pinene	0,06	Methyl eugenol *	1,19
β -Myrcene	0,22	β -Caryophyllene	0,29
Linalool *	1,11	α -Guaiene	0,15
Nonanal	0,07	α -Humulene	0,11
cis-Rose oxide	0,33	D-Germacrene	0,35
Phenyl ethyl alcohol	0,62	Pentadecane	0,34
trans-Rose oxide	0,13	α -Bulnesene	0,13
Terpinen-4-ol	0,16	Hexadecane	0,07
α -Terpineol	0,25	8-Heptadecene	0,27
Nerol	10,24	(Z,E)-Farnesol *	0,17
beta-Citronellol *	27,49	Heptadecane	2,36
β -Citral=Neral *	0,48	(E,E)-Farnesol *	1,99
Geraniol *	22,43	Octadecane	0,17
α -Citral=Geraniol *	0,90	Nonadecene	4,07
Citronellyl acetate	0,93	Nonadecane	13,43
Neryl acetate	0,06	Eicosane	1,05
Geranyl acetate	1,04	Heneicosane	5,52

* Allergen component


The Deputy Director

Dr. P. Chatzopoulou
Senior Researcher

The Chemist


Eleni Lalidou