



INSTITUTE OF PLANT BREEDING AND GENETIC RESOURCES
DEPARTMENT OF AROMATIC AND MEDICINAL PLANTS
P.O. Box 60458, GR-57001, THERMI, THESSALONIKI, GREECE
TEL.: +30 2310 471 110, ext. 0 202
FAX: +30 2310 473 024
Email: chatzopoulou@ipgrb.gr
aromparc.ethiage@gmail.com

Thessaloniki, 15 May 2020
Prot.no: 1231

To AETHERIAL OILS - "Single Member
Private Company"
Karathanasi & Vlahakou
GR-56224
EVOSMOS, THESSALONIKI
GREECE

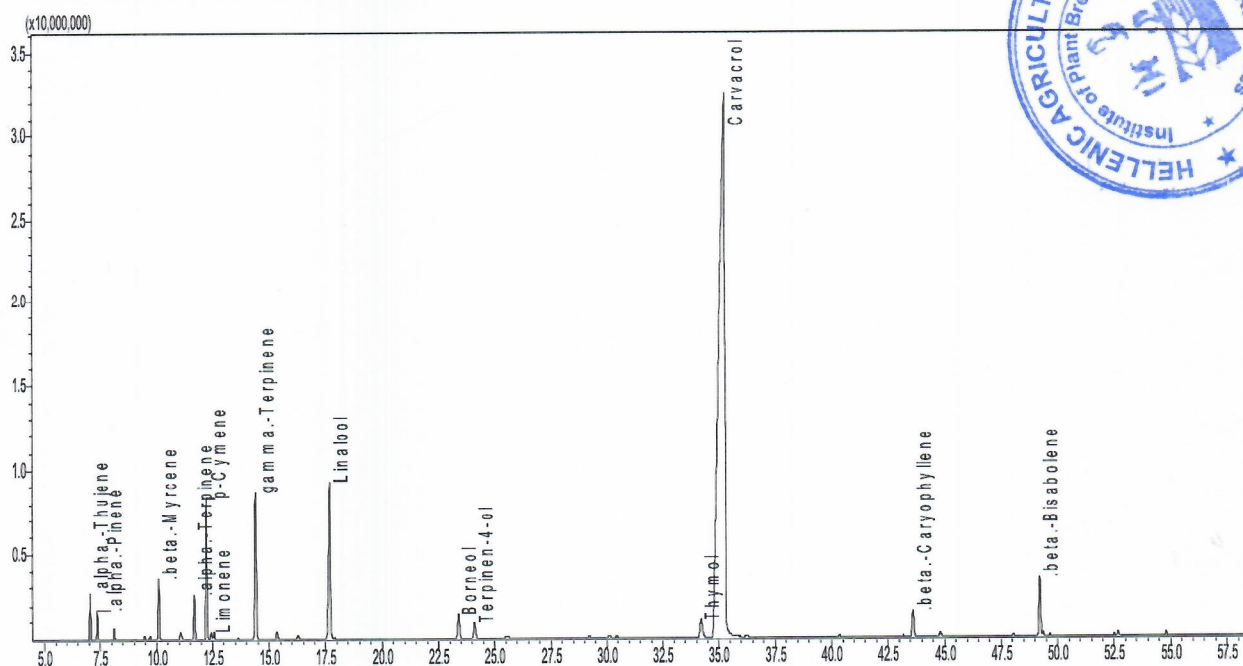
Certificate of Analysis

Sample number	:	106/2020
Sample type	:	OREGANO ESSENTIAL OIL
LOT	:	062200801
Sample code	:	SSN20/054
Customer name	:	AETHERIAL OILS
Region	:	EVOSMOS, THESSALONIKI, GREECE

Analysis conditions:

GC/MS : Gas Chromatograph 17A Ver. 3 / Mass Spectrometer Shimadzu QP-5050A / GC/MSSolution Ver1.21 software / column: DB-5 30m x 0,25mm x 0,25µm Carrier gas : He
Temperature program: 55–110°C (1,5°C/min), 110–150°C (3°C/min), 150–220°C (8°C/min) and 220°C for 10 min

Chromatographic profile (GC/MS)





Thessaloniki, 15 May 2020

Prot.no: 1231

Sample number	:	106/2020
Sample type	:	OREGANO ESSENTIAL OIL
LOT	:	062200801
Sample code	:	SSN20/054
Customer name	:	AETHERIAL OILS
Region	:	EVOSMOS, THESSALONIKI, GREECE

ESSENTIAL OIL ANALYSIS			
COMPOUND	% YIELD	COMPOUND	% YIELD
α -thujene	0,97	borneol	1,13
α -pinene	0,67	terpinen-4-ol	0,73
camphene	0,29	α -terpineol	0,15
β -pinene	0,12	carvacrol methyl ether	0,10
1-octen-3-ol	0,12	thymol	1,00
β -myrcene	1,65	carvacrol	70,53
α -phellandrene	0,27	carvacrol acetate	0,09
δ -3-carene	0,07	β -caryophyllene	0,98
α -terpinene	1,33	α -trans-bergamotene	0,04
p-cymene	4,47	aromadendrene	0,14
Limonene *	0,23	α -humulene	0,04
β -phellandrene	0,23	β -bisabolene	1,94
trans- β -ocimene	0,05	γ -cadinene	0,11
γ -terpinene	5,06	δ -cadinene	0,05
cis-sabinene hydrate	0,30	spathulenol	0,07
α -terpinolene	0,16	caryophyllene oxide	0,14
Linalool *	6,57	δ -cadinol	0,09

* Allergen component

The Director
Dr P. Chatzopoulou
Senior Researcher

The Chemist

Eleni Lalidou